

BRITTENPEARS
ARTS

Summer at Snape

26 July – 31 August 2024





Summer at Snape

The ultimate celebration of summer returns with over 50 events.

A season of memorable days and nights with world-class entertainment and a programme tailored for everyone awaits. Immerse yourself in concerts, art, walks, workshops and more.

Our aim is simple: to ensure that music and the arts transform people's lives and bring the community together. That is why we have curated a programme filled with opportunities for you to take part in and enjoy.

We look forward to welcoming you and your family for a fabulous summer.

03 Introduction

04 Your summer

06 What's on

24 Visual art

26 All summer long

28 Shops, food and
drink

30 The Red House

32 Friends

34 Booking

35 Support us



Concerts

Music for everyone – from classical hits with the London Symphony Orchestra and new music from the trailblazing Sona Jobarteh, to the alt-pop electronica of Caswell, brassy joys with the BBC Big Band, and classy tributes to Ella Fitzgerald and Joni Mitchell. A dazzling summer of music for all to enjoy.

Families

A summer of creativity for children, families, and young people – family concerts with top-class musicians, the thrill of the Aldeburgh Carnival, the talents of our Aldeburgh Young Musicians as they stage the Battle of the Bands, Mini Music Makers sessions for our youngest audiences, and much more.

Take part

Fun for everyone with Come and Sing Disney, vibrant African drumming and dancing at the Wooden Roots Experience, engaging vocal sessions with Apollo5, music and mindfulness wellbeing workshops with Quietnote, and plenty of other opportunities for a wide range of people to get creative.

Explore

Make a day of it with tranquil boat trips along the River Alde, smooth Sunday brunch with live jazz, thought-provoking art exhibitions, a special summer shopping day, and fascinating glimpses of living heritage at The Red House.



Sinfonia of London conducted by John Wilson

Friday 26 July

Friday 26 July, 7.30pm

Sinfonia of London

Sinfonia of London
Charlie Lovell-Jones violin
John Wilson conductor

A dazzling orchestral experience with John Wilson and his Sinfonia of London performing exciting and colourful showpieces.

Our summer programme opens with a bang: Britten's well-loved Young Person's Guide to the Orchestra is complemented in the first half by Walton's Violin Concerto, originally commissioned for Jascha Heifetz and played here by the extraordinary British talent Charlie Lovell-Jones.

The second half features Rachmaninoff's masterful and exuberant Symphony No.2.

Snape Maltings Concert Hall
Tickets: £65, £50, £30, £10
Under 30s half price

Saturday 27 July

Saturday 27 July, 10.30am – 4.30pm

Behind the Scenes at The Red House

Have you ever wondered what goes on behind the scenes at The Red House? Get an inside view of the spaces not usually open to the public, and meet the dedicated team responsible for Benjamin Britten and Peter Pears' beloved home.

The Red House, Aldeburgh
Tickets: Included with general admission

Saturday 27 July, 1pm & 3.30pm

Family Concert: Stan and Mabel

London Mozart Players
Polly Ives presenter

Join Stan and Mabel, dog and cat friends, on a musical adventure as they set out to form the greatest orchestra in the world. This fun-packed concert is suitable for children aged 3+ and their grown-ups.

Britten Studio, Snape Maltings
Tickets: £10 **Under 18s** half price

Sunday 28 July

Sunday 28 July, 9am – 12pm

Sunday Brunch with Live Jazz

Start the day with smooth live jazz, incredible panoramic views, and a delicious seasonal menu that's complete with excellent vegetarian and vegan options.

River View Café & Bar, Snape Maltings

Sunday 28 July, 2.30pm

A Celebration of Suffolk Singing

A showcase performance celebrating singing in our community, by choirs and music groups from across Suffolk alongside the National Teachers' Choir.

Snape Maltings Concert Hall
Tickets: £10 **Under 30s** half price

Monday 29 July

Monday 29 July, 10am, 11.30am, 1.30pm & 3pm

Quietnote: Music and Mindfulness

A day of wellbeing workshops with a distinctive music-based approach, focussed on benefiting mental health and increasing happiness.

Jerwood Kiln Studio, Snape Maltings
Tickets: £12.50 **Under 30s** half price

Monday 29 July, 7.30pm

The Pasadena Roof Orchestra

The Pasadena Roof Orchestra
Duncan Galloway leader

The Pasadena Roof Orchestra celebrates 55 years of touring with lovingly recreated orchestrations of 1920s and 1930s classics by Duke Ellington, George Gershwin, and many more.

Snape Maltings Concert Hall
Tickets: £33, £25, £17, £10
Under 30s half price



Tunde Baiyewu

Tuesday 30 July

Tuesday 30 July, 7.30pm

Tunde from Lighthouse Family

Lead singer of the iconic Lighthouse Family, Tunde Baiyewu and his band bring a mixture of new songs and greatest hits including High, Lifted, and Lost in Space.

Celebrate three decades of the unique sound and timeless songs of this prominent figure in the world of soul and R&B music.

Snape Maltings Concert Hall

Tickets: £33, £25, £17, £10

Under 30s half price

Info and booking:
brittenpearsarts.org
 01728 687110

Wednesday 31 July

Wednesday 31 July, 11am & 11.30am

Guided Tours at The Red House

Enjoy an intimate view of The Red House on our Wednesday tours. You will be guided through Britten and Pears' house, studio and library plus a visit to the Archive where you will get a chance to see some hidden gems.

The Red House, Aldeburgh

Tickets: £15 **Under 30s, wheelchair users and carers** half price

Wednesday 31 July

Music Makers: Music Theatre

Young music-makers are invited to come and explore the world of music theatre, guided by members of Aldeburgh Young Musicians and professional artists.

Ages 5 – 7: 2pm – 3pm

A free session of music-making designed for KS1 pupils, with activities including musical warm-ups, games, and learning new songs.

Ages 8 – 11: 3.30pm – 5pm

A free afternoon of music-making designed for KS2 pupils, with activities including musical warm-ups, games, learning and composing new songs, and improvising together.

Peter Pears Recital Room, Snape Maltings

Tickets: Free; booking required

Wednesday 31 July, 7.30pm

This Flight Tonight: The Songs of Joni Mitchell

Paul Zervas guitar, voice

Kathryn Pepper voice

An intimate tribute to the timeless songs of the legendary Joni Mitchell, with classics including California, A Case of You, and Both Sides Now.

Snape Maltings Concert Hall

Tickets: £45, £35, £25, £10

Under 30s half price

Thursday 1 August

Thursday 1 August, 7.30pm

Suffolk Youth Orchestra: Four Sea Interludes

Suffolk Youth Orchestra

John Paul Jennings conductor

Suffolk's finest young musicians return to Snape Maltings with a vibrant programme including Britten's Four Sea Interludes and Rimsky-Korsakov's Scheherazade.

Snape Maltings Concert Hall

Tickets: £33, £25, £17, £10

Under 30s half price

Friday 2 August

Friday 2 August, 4pm

Aldeburgh Young Musicians: Music Theatre

Vocalists and instrumentalists from Aldeburgh Young Musicians perform the swashbuckling story of The Pirates of Thorpeness Bay - a unique tale told through much-loved hits from the West End.

Britten Studio, Snape Maltings

Tickets: £6 **Under 30s** half price



Wooden Roots Experience

Friday 2 August, 7.30pm

Alina Ibragimova and Cédric Tiberghien

Alina Ibragimova violin
Cédric Tiberghien piano

Two international stars perform much-loved sonatas for violin and piano including Beethoven's epic "Kreutzer" Sonata.

Snape Maltings Concert Hall
Tickets: £45, £35, £25, £10
Under 30s half price

Saturday 3 August

Saturday 3 & Sunday 4 August

Wooden Roots Experience

A one-of-a-kind weekend filled with traditional West African drum and dance workshops, presented in partnership with Wooden Roots.

Snape Maltings

Sunday 4 August

Sunday 4 August, 6pm

Sona Jobarteh

An electrifying performance by international trailblazer Sona Jobarteh, the first female professional West African kora player.

Snape Maltings Concert Hall
Tickets: £33, £25, £17, £10
Under 30s half price

Monday 5 August

Monday 5 August, 7.30pm

Southbank Sinfonia

Southbank Sinfonia
Karen Kuronuma piano
Simon Over conductor

The brilliant emerging players of the Southbank Sinfonia delight us with Brahms' Second Symphony and Rachmaninoff's Second Piano Concerto, recently announced as the new No.1 in Classic FM's Hall of Fame.

Snape Maltings Concert Hall
Tickets: £45, £35, £25, £10
Under 30s half price

Tuesday 6 August

Tuesday 6 August, 6pm

Aldeburgh Young Musicians: Leavers' Celebration

Join Aldeburgh Young Musicians in celebrating the musical achievements of the 2024 graduates with a special performance in the Concert Hall.

Snape Maltings Concert Hall
Tickets: £10 Under 30s half price

Wednesday 7 August

Wednesday 7 August, 11am & 11.30am

Guided Tours at The Red House

See page 9 for more details.

The Red House, Aldeburgh
Tickets: £15 Under 30s, wheelchair users and carers half price

Wednesday 7 August, 7pm

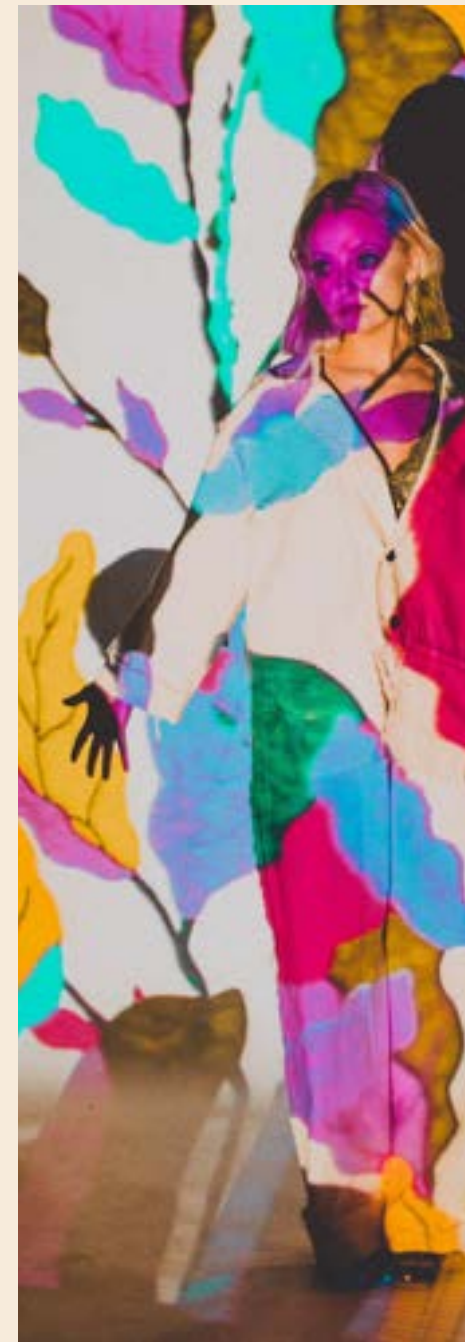
Caswell

Support act: Sophie The Great

Caswell and her band light up the Britten Studio with captivating storytelling, soulful vocals, and hypnotic melodies. A Caswell performance is a delicate dance between vulnerability and power.

This is a standing gig and the bar will be open throughout the evening.

Britten Studio, Snape Maltings
Tickets: £12.50



Caswell



Thursday 8 August

Thursday 8 August, 7.30pm

Irish Baroque Orchestra: Best-loved Baroque

Irish Baroque Orchestra
Peter Whelan conductor

The Olivier Award-winning ensemble brings a programme of best-loved Baroque delights including Handel's *Arrival of the Queen of Sheba* and his ever-popular *Water Music*.

The world-class IBO is celebrated as Ireland's flagship period-instrument orchestra and is led by acclaimed artistic director Peter Whelan.

Snape Maltings Concert Hall

Tickets: £33, £25, £17, £10

Under 30s half price

Friday 9 August

Friday 9 August, 5pm

Aldeburgh Young Musicians: Battle of the Bands

Join Aldeburgh Young Musicians for their final performance of 2023/24 where they take to the stage for a 'Battle of the Bands'.

Britten Studio, Snape Maltings

Tickets: £12.50 **Under 30s** half price

Saturday 10 August

Saturday 10 August, 7.30pm

Alim Beisembayev

Leading young pianist Alim Beisembayev – BBC New Generation Artist and winner of the Leeds International Piano Competition – performs a classic recital of Schubert, Debussy, and Chopin.

Snape Maltings Concert Hall

Tickets: £45, £35, £25, £10

Under 30s half price

Sunday 11 August

Sunday 11 August, 7pm

Mike Lovatt's Brass Pack: A Portrait of Ella

Mike Lovatt's Brass Pack
Louise Marshall voice

Mike Lovatt's phenomenal band returns with stellar vocalist Louise Marshall for a celebration of the life and music of the great Ella Fitzgerald.

Snape Maltings Concert Hall

Tickets: £45, £35, £25, £10

Under 30s half price



Monday 12 August

Monday 12 August, 1.30pm

Family Come and Sing with Apollo5

The whole family is invited to come and make music in a fun, creative singing session with the singers of Apollo5.

Britten Studio, Snape Maltings

Tickets: £6

Monday 12 August, 2.30pm

Mini Music Makers

A session of music and play activities for ages 0–5. Join Joe and friends for singing and creative play: great for little ones to learn social skills, turn-taking, sharing and of course, how to have fun!

Peter Pears Recital Room, Snape Maltings

Tickets: Free

Monday 12 August, 3.30pm

Music Makers

A free workshop of family music-making for children aged 5–10 and their grown-ups. All will enjoy warm-ups, musical games, and creating new music.

Peter Pears Recital Room, Snape Maltings

Tickets: Free

Monday 12 August, 5pm

Explore Your Voice with Apollo5

Singers are invited to come and develop their vocal capabilities and explore group singing with the professional vocal ensemble Apollo5.

Britten Studio, Snape Maltings

Tickets: £6

Monday 12 August, 7.30pm

Apollo5 with Fraser Wilson: Invocations

Apollo5

Fraser Wilson piano

A delightful summery programme spanning genres and centuries, including What A Wonderful World, Purcell's Plaint, Ain't No Sunshine, and many more.

Britten Studio, Snape Maltings

Tickets: £22, £17 **Under 30s** half price

Tuesday 13 August

Tuesday 13 August, 7.30pm

Pulman and Stilgoe: A Couple of Swells

Liza Pulman voice

Joe Stilgoe piano

With 'a voice as smooth as silk', singer Liza Pulman joins the internationally acclaimed pianist Joe Stilgoe to present classic songs and duets including People Will Say We're in Love and Me and My Shadow.

Snape Maltings Concert Hall

Tickets: £33, £25, £17, £10

Under 30s half price

Wednesday 14 August

Wednesday 14 August, 10.30am – 4.30pm

National Garden Scheme at The Red House

Explore the five-acre garden surrounding the former home of Britten and Pears; features include mixed herbaceous borders, kitchen garden, contemporary planting, and a new summer tropical border.

The Red House, Aldeburgh

Tickets: £5

Masabane Cecilia Rangwanasha



Wednesday 14 August, 7.30pm

Masabane Cecilia Rangwanasha

Masabane Cecilia Rangwanasha soprano

Simon Lepper piano

A suitcase full of songs from around the world in the company of the South African soprano with pianist Simon Lepper.

The rising star of the opera world presents a wonderfully varied programme that includes Mahler, South African songs, and timeless traditional pieces such as Amazing Grace.

Britten Studio, Snape Maltings

Tickets: £32, £27 **Under 30s** half price

Thursday 15 August

Thursday 15 August, 7.30pm

Altan: Donegal

Enjoy a heartening evening with legendary Irish folk band Altan for the first UK performance of the newly released album, Donegal.

Snape Maltings Concert Hall

Tickets: £33, £25, £17, £10

Under 30s half price

Friday 16 August

Friday 16 August, 7.30pm

The Ukulele Orchestra of Great Britain

Join the royalty of the ukulele scene as they pluck, sing, joke and whistle their way through a captivating evening of songs by Bowie, Tchaikovsky, ZZ Top, The Cranberries, and many others.

Snape Maltings Concert Hall

Tickets: £33, £25, £17, £10

Under 30s half price

Saturday 17 August

Saturday 17 August, 10.30am – 4.30pm

Behind the Scenes at The Red House

See page 7 for more details.

The Red House, Aldeburgh

Tickets: Included with general admission

Saturday 17 August, 3pm

VOICEBOX: UNBOUND

Patricia Aughterlonie performer

Hester Dart performer

t I k performer

Oskar McCarthy performer

Sarah Parkin performer

Pascal Zurek performer

Tarli Lumby dancer

A showcase of brand new work, UNBOUND is the culmination of the year-long VOICEBOX project, led by Juliet Fraser, for advanced singers specialising in contemporary vocal performance.

Britten Studio, Snape Maltings

Tickets: £12.50 **Under 30s** half price

Saturday 17 August, 5pm

Come and Sing: Disney

Britten Pears Chamber Choir

Freya Parry vocalist

Ben Parry leader

Gather your family and friends to sing your heart out as we fill Snape Maltings Concert Hall with well-loved Disney classics.

Raise your voice with uplifting songs from favourite Disney films including Frozen, The Lion King, Aladdin, Toy Story, Dumbo, The Little Mermaid, Beauty and the Beast and The Jungle Book.

Snape Maltings Concert Hall

Tickets: £20 **Under 30s** half price

Sunday 18 August

Sunday 18 August, 7pm

BBC Big Band: Rhapsody in Blue

BBC Big Band

Barry Forgie conductor

A sparkling celebration of Gershwin's most popular and acclaimed works, performed by one of the world's finest jazz orchestras.

The concert showcases the music of one of the greatest composers of the twentieth century – whose work would go on to become a core part of the 'Great American Songbook' – including Summertime and Fascinating Rhythm.

"World-class musicians. A brilliant musical force"

- The Telegraph

Snape Maltings Concert Hall

Tickets: £45, £35, £25, £10

Under 30s half price

Monday 19 August

Monday 19 August

Group A at Aldeburgh Carnival

A free summer project for ages 8 – 18, with singing, dancing and movement, ending in a performance at the Aldeburgh Carnival.

In this three-day project (17 – 19 August) young participants will create a performance for this year's Aldeburgh Carnival. Led by The Fontanas, participants will explore high-energy music – from Latin ska anthems to Brazilian samba-soul – to create a unique sound.

Snape Maltings & Aldeburgh High Street

Booking: please visit our website



Tuesday 20 August

Tuesday 20 August, 7.30pm

The Gesualdo Six

The Gesualdo Six
Owain Park director

An atmospheric journey through sacred and secular vocal-consort works by the group's namesake, the 17th-century Italian composer Gesualdo.

The award-winning ensemble includes some of the UK's finest consort singers, and here presents a programme of exquisite vocal works.

Snape Maltings Concert Hall

Tickets: £33, £25, £17, £10

Under 30s half price



Seckou Keita

Wednesday 21 August

Wednesday 21 August, 11am & 11.30am

Guided Tours at The Red House

See page 9 for more details.

The Red House, Aldeburgh

Tickets: £15 Under 30s, wheelchair users
and carers half price

Wednesday 21 & Thursday 22 August, 2.30pm

Masterclass: French Song with Véronique Gens and Susan Manoff I & II

Britten Pears Young Artists

Véronique Gens tutor

Susan Manoff tutor

A behind-the-scenes glimpse of international experts coaching singers and pianists from the Britten Pears Young Artist Programme in French song.

Peter Pears Recital Room, Snape Maltings

Tickets: £12.50 Under 30s half price

Thursday 22 August

Thursday 22 August, 7.30pm

Seckou Keita: HOMELAND

Following last year's Concert Hall sell-out, 'the Hendrix of the kora' returns with his band to present his new album, HOMELAND – an exploration of his Senegalese roots with influences from around the world.

"An absolutely magical sound"

- BBC Radio 2

Snape Maltings Concert Hall

Tickets: £20 Under 30s half price

Vilde Frang



Friday 23 August

Friday 23 August, 7pm

London Symphony Orchestra

London Symphony Orchestra

Vilde Frang violin

Antonio Pappano conductor

An exhilarating evening of Elgar and Sibelius performed by superstar violinist Vilde Frang and the world-famous LSO, conducted by the esteemed Antonio Pappano.

Elgar's Violin Concerto is one of the most remarkable and distinctive concertos in the repertoire. Here the soloist is Vilde Frang, whose "exquisite tonal subtlety" is the perfect match for this sublime work.

It is contrasted with the tour de force of Sibelius' First Symphony, written at the turn of the 20th century.

Snape Maltings Concert Hall

Tickets: £65, £50, £30, £10

Under 30s half price

Info and booking:
brittenpearsarts.org
01728 687110

Saturday 24 August

Saturday 24 August, 2pm

End of Course Recital: French Song and Mélodie

Britten Pears Young Artists

The culmination of an intensive six-day course for the emerging professional musicians of the Britten Pears Young Artist Programme.

Britten Studio, Snape Maltings

Tickets: £12.50 **Under 30s** half price

Saturday 24 August, 7.30pm

Black Dyke Band

Black Dyke Band

Nicholas J. Childs conductor

The winners of the 2023 National Championships present breathtaking brass-band classics spanning the worlds of film, classical, and jazz.

Snape Maltings Concert Hall

Tickets: £45, £35, £25, £10

Under 30s half price

Info and booking:
brittenpearsarts.org
01728 687110

Sunday 25 August

Sunday 25 August, 7pm

Women's Stories from the Ancient World

Nardus Williams soprano

Elizabeth Kenny archlute, theorbo

Mary Beard narrator

Classicist Mary Beard illuminates stories of women from the ancient world, illustrated by spellbinding songs and arias performed by soprano Nardus Williams and lutenist Elizabeth Kenny.

Britten Studio, Snape Maltings

Tickets: £22, £17 **Under 30s** half price

Monday 26 August

Monday 26 August, 7.30pm

United Strings of Europe: Through the Night

United Strings of Europe

Beibei Wang crotales

A special performance of this remarkable ensemble's new album – exploring the depths of human emotion through music of the night.

Praised for original programming and expressive playing, United Strings of Europe present a heartfelt sequence of atmospheric music from the new album Through the Night.

Snape Maltings Concert Hall

Tickets: £33, £25, £17, £10

Under 30s half price

Tuesday 27 August

Tuesday 27 August, 7.30pm

MILOŠ

Always a highlight of Summer at Snape, the celebrated classical guitarist returns to delight us with his own take on beautiful works arranged for solo guitar.

MILOŠ has earned legions of fans, awards, and acclaim around the world through his extensive touring, six chart-topping recordings, and television appearances.

In this recital MILOŠ brings his warm presence and innate musicality to the stage of Snape Maltings Concert Hall.

Snape Maltings Concert Hall

Tickets: £45, £35, £25, £10

Under 30s half price



Wednesday 28 August

Wednesday 28 August, 11am & 11.30am

Guided Tours at The Red House

See page 9 for more details.

The Red House, Aldeburgh

Tickets: £15 Under 30s, wheelchair users and carers half price

Thursday 29 August

Thursday 29 August, afternoon

Bandstand

Come and enjoy an afternoon of outdoor performances showcasing local talent from across Suffolk.

The whole family is welcome to soak up live music in the fresh air in the beautiful setting of Snape Maltings. Stay for the whole time or dip in and out.

Henry Moore Lawn, Snape Maltings

Free no ticket required

Thursday 29 August, 7.30pm

Lucy Parham and Harriet Walter: I, Clara

Lucy Parham piano, script
Harriet Walter narrator

The life story of Clara Schumann told in her own words, with readings from her letters and diaries interspersed with live performances of her piano music.

"A beautifully crafted portrait of Clara Schumann. Be prepared to shed a tear"

- Pianist Magazine

Britten Studio, Snape Maltings

Tickets: £22, £17 Under 30s half price

Friday 30 August

Friday 30 August, 7.30pm

Friday Night Is Music Night

BBC Concert Orchestra
Katie Derham presenter

Join us as we welcome back the BBC Concert Orchestra to Snape Maltings Concert Hall for a special recording of the well-loved Radio 3 show.

Snape Maltings Concert Hall

Tickets: £45, £35, £25, £10

Under 30s half price

Stephen Hough



Saturday 31 August

Saturday 31 August, 3pm

The Tale Collectors

Real-life stories from the Suffolk community woven together to create a thought-provoking performance filled with poignancy, sensitivity, and laughter.

Peter Pears Recital Room, Snape Maltings

Tickets: £6 Under 30s half price

Saturday 31 August, 7.30pm

Stephen Hough

Summer at Snape closes with one of the leading pianists of his generation in a recital of beguiling music by Liszt, Chopin and Chaminade in the stunning acoustic of Snape Maltings Concert Hall.

A special opportunity to hear a master interpreter at work.

Snape Maltings Concert Hall

Tickets: £45, £35, £25, £10

Under 30s half price

Info and booking:
brittenpearsarts.org
01728 687110

Visual art

An extensive range of sculpture and art can be discovered at our venues. The Red House has an art collection of over 1,200 works from Britten and Pears' own collection on display. Gallery spaces in both locations offer a variety of curated exhibitions.

Sculpture Park

Since Snape Maltings Concert Hall was created in 1967, artists have exhibited and installed work throughout the site.

Ryan Gander

To Give Light (Northern Aspirational Charms), 2018

Barbara Hepworth

The Family of Man, 1970

Henry Moore

Reclining Figure: Bunched, 1969

Alison Wilding

Migrant, 2003

Snape Maltings

Free no ticket required



Until Sunday 3 November

Pears and Colour

From the Britten Pears Arts Collection

A group exhibition featuring pieces from the Britten Pears Arts Collection, exploring a joyful thread in Peter Pears' collecting interests: primary colour.

Kitchen Gallery, The Red House, Aldeburgh

Tickets: Included with general admission

Until Sunday 3 November

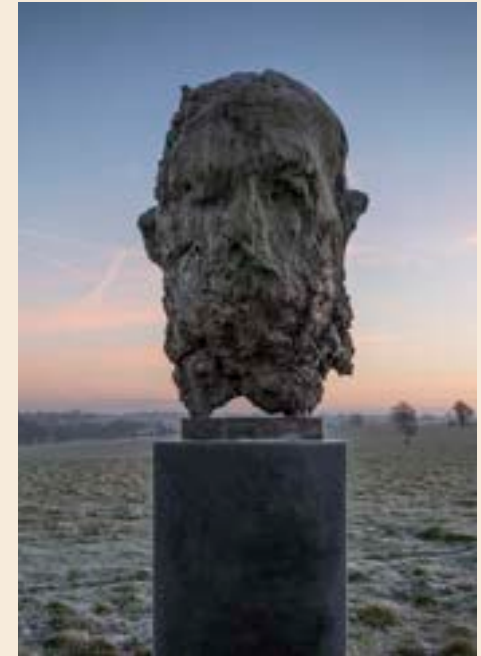
The Composer's Place

Britten, the Festival and his Suffolk home

An exhibition exploring Benjamin Britten and Peter Pears' lives in Aldeburgh and how this coastal town inspired them to establish the Aldeburgh Festival of Music and the Arts.

The Red House, Aldeburgh

Tickets: Included with general admission



Saturday 20 July – Sunday 1 September

Summer Contemporary

This summer, Britten Pears Arts curates an exhibition of ambitious scale, with work by more than one hundred artists, all with a strong Suffolk connection.

Laurence Edwards, Abigail Lane, Glenn Brown, Ffiona Lewis and Maggi Hambling are among the many artists exhibiting in several galleries and spaces across Snape Maltings.

The exhibition is curated by Devi Singh.

Snape Maltings

Free no ticket required

Laurence Edwards

Chthonic Head 1, 2024

Edition 4/4, Bronze, cast in Halesworth, H100cm x W65cm

Courtesy the artist, Photo Bill Jackson



All summer long

A place to enjoy all summer long; Snape Maltings is surrounded by calming nature and wildlife, perfect for whiling away a few hours outdoors. Bring all the family for a guided walk, a relaxing river trip or a visit to our Farmers' Markets, celebrating the finest Suffolk produce.

Throughout summer River Trips

Head to the historic quay at Snape Maltings for a 45-minute boat trip along the River Alde, abundant with wildlife and with stunning views across the mudflats and reeds. Take the Tilly Too heading out towards Iken or hop on the Hagar which is ideal for birdwatchers.

Snape Maltings Quay
Tickets: £15 Under 14s £9
Infants (under 1) Free

Throughout summer Summer Trail

A fun, free way for little adventurers to explore the site as they follow a trail trying to find clues. Collect a map from our Visitor Centre, and once you have solved the puzzle head back to claim a treat.

Snape Maltings
Free no ticket required

Info and booking:
brittenpearsarts.org
01728 687110



Saturday 6 July, 3 August & 7 September,
9.30am – 1pm

Farmers' Markets

Our Farmers' Markets are the perfect opportunity to sample some of the region's finest produce. Indulge in an array of food and drink including cheeses, savoury pastries, jams and chutneys, locally grown fruit, artisan spirits and delicious hand-crafted chocolates.

Snape Maltings
Free no ticket required



Tuesday 23, 30 July, 6, 13, 20, 27 August,
10am & 2pm

RSPB Wildlife Walks

The reedbeds are home to a variety of wildlife species. Join the knowledgeable volunteers from RSPB Minsmere who will guide you on a fun family stroll in search of the birds, butterflies, beetles and bugs that inhabit the nature that surrounds us.

Snape Maltings
Tickets: from £7.25

Extend your stay

With holiday accommodation that will fit all the family, why not stay at one of our 15 properties? Enjoy a home-from-home experience and wake up under vast Suffolk skies.

Visit our website to find out more.





Discover shops, cafés and more

We are home to an array of independent shops and eateries offering something for all. Before your concert, indulge in a meal at the River View Restaurant with delicious food and spectacular views or browse inspirational new summer collections in our shops.

Did you know...?

Every purchase made at Snape Maltings supports the pioneering music, arts and heritage work of Britten Pears Arts.

House & Garden

The ultimate place for home inspiration, this spacious shop is filled with a lovingly curated range of furniture, textiles and accessories. You'll also find gifts, books, cards and children's toys.

Samphire Boutique

Carefully curated women's clothing and accessories with a focus on natural materials and strong ethical values.

Food Hall

A true celebration of Suffolk's food and drink producers and delicacies sourced from around the world.

Craft Shop

Fairly-traded products from around the world alongside hand-crafted collections from British artisan makers.

The Shed

Indulge in all the essentials you didn't know you needed for your garden, boot room and beloved pets.

MALT Café & Takeaway

Serving a selection of sandwiches, cakes and pastries, alongside barista-made coffee, maltshakes and cold drinks.

River View Café & Bar

Serving a delicious seasonal lunch menu that includes vegan and gluten-free options plus a full children's menu.

River View Restaurant

Panoramic views of the reedbeds and a choice of a two- or three-course dinner menu including some of the best local produce Suffolk has to offer.

Quay Hut

Situated on the Quay, offering informal takeaway food, hot and cold drinks, and ice creams.

Pop-Up Bar

Serving alcoholic beverages, hot and cold drinks, ice creams and snacks in the Concert Hall foyer.

Plough & Sail Pub

Traditional pub serving modern British cuisine.

Asteria Wellbeing

Environmentally conscious hair, beauty and wellness salon.

The Early Music Shop

Specialist shop focusing on instruments, accessories and printed music.

Snape Antiques Centre

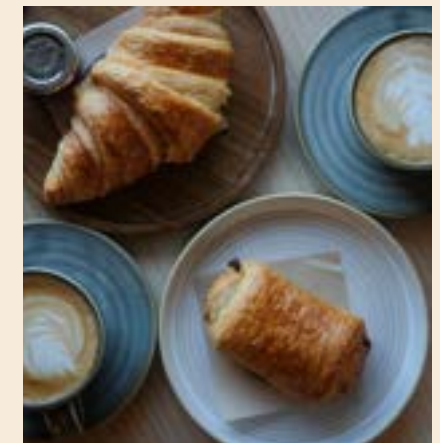
Discover artefacts, antiques and collectors' items.

Earsham St. Deli

Independent award-winning delicatessen offering a range of delicious delights.

Saturday 6 July Shopping Day

Enjoy food and drink tastings, live music and special guests. There will also be our Farmers' Market and face-painting for children.





The Red House

**The Red House, Golf Lane, Aldeburgh,
Suffolk IP15 5PZ**

Thursday – Sunday, 10.30am – 4.30pm

Admission price: £11 Under 16s free
Concessions are available

Info and booking:
brittenpearsarts.org
01728 687110

Benjamin Britten and Peter Pears' home in Aldeburgh offers a charming snapshot of the couple's life.

The farmhouse, nestled in a beautiful five-acre garden, is home to their collections and Archive alongside a gallery space, museum shop and café. There is plenty to do: enjoy a picnic and croquet on the lawn, follow the family garden trail, hear a story from the Archive, visit the shop and explore an exhibition.

Don't miss

Thursdays and Fridays
Stories from the Archive

Fridays
Mini Music Makers

Saturdays 27 July; 17 August
Behind the Scenes (see page 7)

Wednesdays 31 July; 7, 21, 28 August
Guided Tours (see page 9)

Wednesday 14 August
National Garden Scheme (see page 14)

Join the Friends of Britten Pears Arts

Embrace the spirit of community and become a Friend of Britten Pears Arts. As a valued supporter, you will be part of a passionate collective dedicated to music, heritage, and the arts.

Why become a member?

Secure your tickets in advance

All members enjoy priority booking for each season's programme.

Access special events

Friends receive invitations to a carefully curated season of members' events, including open rehearsals, artist meet-and-greets and lots more. Scan the QR code to find out what we have planned for this summer.

Make an impact

Your contributions drive our charitable work, positively affecting over 100,000 lives annually through innovative projects, community initiatives, and a world-class performance programme. Explore the various levels of support on our website and join us in transforming lives through music.

Top left:
Participate

Top right:
Mini Music Makers

Bottom left:
Celebration

Bottom right:
East Suffolk Skylarks



More info:
brittenpearsarts.org
01728 687110





Booking

How to book

The best way to book for our events is online:
brittenpearsarts.org

If you have decided which events you want to book, you can book multiple events quickly by using our quickbook web page:

quickbook.brittenpearsarts.org



Alternatively, book by phone or in person via our Box Office.

Info and booking:
brittenpearsarts.org
01728 687110

Discounts

Under 30s can access half-price tickets for most events.

Wheelchair spaces and transfer seats can be booked by contacting the Box Office. A concession is available to companions of wheelchair users.

£10 tickets: pay less for world-class events

We are passionate about inspiring new audiences to experience our concerts and, thanks to generous and ongoing support, we are able to offer a number of £10 tickets for most performances.

How does it work?

£10 tickets are released 4–6 weeks before performances. See our website for dates.

Returned tickets

We cannot give refunds. However, flexible options are available, including an account credit or exchange of tickets for another event (subject to terms and conditions).

Ways to support us

Volunteer

We work with a team of amazing volunteers, who give up their time to help us change lives through the arts. There are a wide range of fantastic opportunities on offer. Roles include gardener, usher, steward at The Red House, archivist and exhibition invigilator.

Become a member

As part of the Britten Pears Arts family, your membership supports innovative programmes with emerging artists and our work in the community, improving people's health and wellbeing through music. Your support also enables our unique archive and heritage work.

Shop and eat

Every purchase you make in our shops and restaurants at Snape Maltings and The Red House supports Britten Pears Arts' charitable work, furthering our mission to make music and the arts useful.

Donate

During the past year, over 500,000 people have engaged with our innovative projects, community work, world-class performance programme and heritage sites. From making a regular donation or donating in memory to running a marathon or raising money at work, there are many different ways you can support us.

Book tickets

By booking tickets, not only will you be experiencing high-quality performances in a world-renowned setting, you will also be supporting our charitable work. And thanks to one of our generous supporters, every £1 donated when purchasing tickets will be matched through our Community Match Funding appeal.

FRI 26 JULY

Sinfonia of London, 7.30pm

SAT 27 JULYBehind the Scenes at
The Red HouseFamily Concert: Stan and
Mabel, 1pm & 3.30pm**SUN 28 JULY**Sunday Brunch with
Live JazzA Celebration of Suffolk
Singing, 2.30pm**MON 29 JULY**Quietnote: Music and
Mindfulness, 10am, 11.30am,
1.30pm & 3pmThe Pasadena Roof
Orchestra, 7.30pm**TUE 30 JULY**Tunde from Lighthouse
Family, 7.30pm**WED 31 JULY**Guided Tours at The Red
House, 11am & 11.30amMusic Makers: Music
Theatre, various timesThis Flight Tonight: The
Songs of Joni Mitchell,
7.30pm**THU 1 AUGUST**Suffolk Youth Orchestra:
Four Sea Interludes,
7.30pm**FRI 2 AUGUST**

AYM: Music Theatre, 4pm

Alina Ibragimova and
Cédric Tiberghien, 7.30pm**SAT 3 AUGUST**

Wooden Roots Experience

SUN 4 AUGUST

Wooden Roots Experience

Sona Jobarteh, 6pm

MON 5 AUGUST

Southbank Sinfonia, 7.30pm

TUE 6 AUGUSTAYM: Leavers' Celebration,
6pm**WED 7 AUGUST**Guided Tours at The Red
House, 11am & 11.30am

Caswell, 7pm

THU 8 AUGUSTIrish Baroque Orchestra,
7.30pm**FRI 9 AUGUST**AYM: Battle of the Bands,
5pm**SAT 10 AUGUST**

Alim Beisembayev, 7.30pm

SUN 11 AUGUSTMike Lovatt's Brass Pack:
A Portrait of Ella, 7pm**MON 12 AUGUST**Family Come and Sing with
Apollo5, 1.30pm

Mini Music Makers, 2.30pm

Music Makers, 3.30pm

Explore Your Voice with
Apollo5, 5pmApollo5 with Fraser Wilson:
Invocations, 7.30pm**TUE 13 AUGUST**Pulman and Stilgoe:
A Couple of Swells, 7.30pm**WED 14 AUGUST**National Garden Scheme
at The Red HouseMasabane Cecilia
Rangwanasha, 7.30pm**THU 15 AUGUST**

Altan: Donegal, 7.30pm

FRI 16 AUGUSTThe Ukulele Orchestra
of Great Britain, 7.30pm**SAT 17 AUGUST**Behind the Scenes at
The Red HouseVOICEBOX:
UNBOUND, 3pmCome and Sing: Disney,
5pm**SUN 18 AUGUST**BBC Big Band:
Rhapsody in Blue, 7pm**MON 19 AUGUST**Group A at Aldeburgh
Carnival**TUE 20 AUGUST**

The Gesualdo Six, 7.30pm

WED 21 AUGUSTGuided Tours at The Red
House, 11am & 11.30amMasterclass: French Song
with Véronique Gens and
Susan Manoff I, 2.30pm**THU 22 AUGUST**Masterclass: French Song
with Véronique Gens and
Susan Manoff II 2.30pmSeckou Keita:
HOMELAND, 7.30pm**FRI 23 AUGUST**London Symphony
Orchestra, 7pm**SAT 24 AUGUST**End of Course Recital:
French Song and Mélodie,
2pm

Black Dyke Band, 7.30pm

SUN 25 AUGUSTWomen's Stories from the
Ancient World, 7pm**MON 26 AUGUST**United Strings of Europe:
Through the Night, 7.30pm**TUE 27 AUGUST**

MILOŠ, 7.30pm

WED 28 AUGUSTGuided Tours at The Red
House, 11am & 11.30am**THU 29 AUGUST**Bandstand
Lucy Parham and Harriet
Walter: I, Clara, 7.30pm**FRI 30 AUGUST**Friday Night Is Music
Night, 7.30pm**SAT 31 AUGUST**The Tale Collectors, 3pm
Stephen Hough, 7.30pm**BRITTEN PEARS
ARTS****brittenpearsarts.org | 01728 687110**